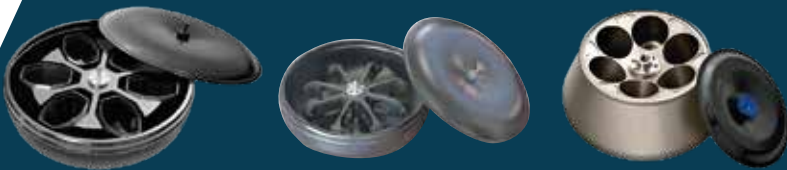




Blood Bank Processing Solutions

DP-2065R 12 B



Calidad ISO 9001/13485
ANMAT: PM1532-1

📍 Calle 34 (Ex Francia) N° 3917, San Martín - B1650IHM - Bs. As. - Arg.
☎ 4755-7780 / 4755-4004 📞 11 2488 7703
🌐 www.presvac.net ✉ presvac@presvac.net





The **Presvac refrigerated centrifuge**, model **DP-2065 R 12B**, is a **high-capacity system** engineered for **heavy-duty processing** in **blood banks and transfusion centers**. Its rotor accommodates up to **12 blood bags** (double, triple, or quadruple) using **2,400 mL bag carriers**, and reaches a **maximum speed of 4,000 RPM**, delivering efficient, reliable component separation.

The **MEMOSOFT V** control platform enables the setup of up to **50 programmable protocols**, with precise adjustment of **speed, temperature, time, acceleration, and braking**.

This centrifuge incorporates **multiple safety systems**, including lid locking, imbalance detection with immediate stop plus audible and visual alarms, a **brushless low-maintenance induction motor**, and a CFC-free refrigeration system designed to be environmentally responsible.

Optional accessory: **barcode reader with PC connection via RS-232 cable**. It allows the software to record the date, time, method, and duration of each centrifugation cycle, ensuring process traceability.

Seguridad Mejorada



Imbalance detection with immediate stop

Provides real-time imbalance monitoring with an instant stop function, protecting both the equipment and samples against any load imbalance.



Stable installation

Adjustable Ø120 mm feet ensure the centrifuge is installed securely and steadily in any environment.



Comprehensive alarm system

Equipped with a multifunction alarm system that monitors abnormal voltage, high temperature, over-speed, load imbalance, missing rotor, brake anomalies, and motor faults.



Anti-vibration lid lock

Prevents accidental opening during operation, safeguarding sample integrity and operator safety.



Robust construction

Steel sheet structure with epoxy paint and a stainless-steel chamber that provides durability and safety.



High-quality connectivity

Equipped with a 220 V, 50/60 Hz power connector for easy, fast, and safe operation.



Emergency lid release

Allows the lid to be manually opened in the event of an emergency or power loss.



All-stainless-steel chamber and inner lid

Delivers excellent durability and corrosion resistance, ensuring a long service life.



Key features of the 12-bag centrifuge

- **Expanded programming capacity**

Streamline operations with built-in memory that stores 50+ customized programs—ideal for standardizing and automating complex procedures in high-demand environments.

- **Advanced thermal efficiency**

Reach a rapid working temperature from ambient conditions, ensuring fast start-up and efficiency in the preparation of temperature-sensitive processes.

- **Low-impact acoustic design**

Reduce laboratory noise with an optimized structural design that keeps sound levels below 65 dB, even at maximum speed.

- **Dynamic cycle management**

Fine-tune every operational stage with 10 programmable acceleration and deceleration ramps, allowing centrifugation profiles to be tailored to the specific requirements of each application.

- **High-efficiency, low-maintenance drive system**

Powered by a brushless induction motor, this unit delivers clean, continuous operation with minimal maintenance, supporting long-term operational reliability.

- **Enhanced stability**

A low center-of-gravity structural design provides maximum mechanical stability during operation, contributing to safe, consistent, and reproducible results across all load types.

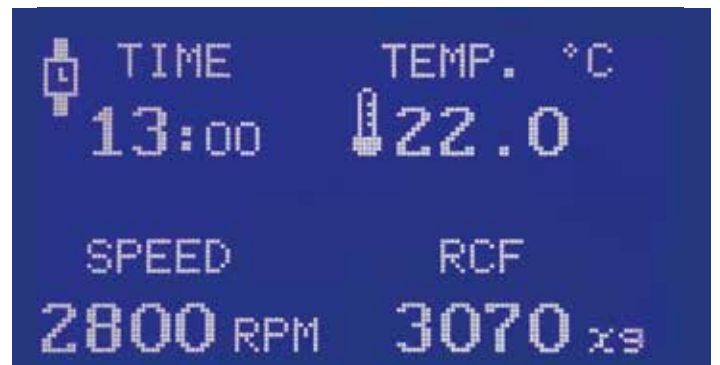
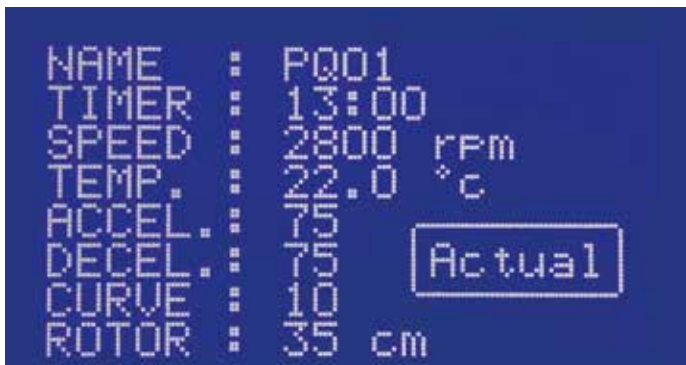


MEMOSOFT V Control Panel



The **MEMOSOFT V control panel** combines proven reliability and safety with an intuitive **user communication system** via **graphic displays** for streamlined programming and equipment management. This upgraded platform can **automatically store all processed units**, ensuring maximum traceability throughout blood unit processing.

With this management system, you can identify **exactly when each blood unit was processed** and securely store the complete centrifugation cycle data—**Date, time, method, and process duration**—delivering a **comprehensive, traceable, and secure** record.





Program Display & Activation



Program Selection



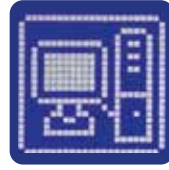
Program Creation & Storage



Delete Program



Manual



PC Data Connection & Transfer



User Group



Enable Data Storage System



Date & Time Settings



Delete Database



Maintenance Time



Centrifugation Time



User Screen Lock



User Identification

Display Graphics Description

```

NAME      : P001
TIMER     : 13:00
SPEED     : 2800 rpm
TEMP.     : 22.0 °C
ACCEL.    : 75
DECEL.    : 75 Actual
CURVE     : 10
ROTOR     : 35 cm

```

Manual Program Creation

Real-Time Parameter Display During Operation

```

TIME      : 13:00
TEMP. °C  : 22.0
SPEED     : 2800 RPM
RCF        : 3070 xg

```



Technical Specifications – DP-2065R 12B Model

Technical Parameter	Value
Depth	1060 mm
Length	870 mm
Height	1010 mm
Weight	317 kg
Materials	Ext: enameled steel Int: stainless steel
Maintenance clearance	not applicable
Mounting	Horizontal adjustable feed
Max. electrical current draw	20 A
Max. power	4400 VA
Power supply	220V +/- 3% 50/60 Hz
Heat dissipation	3000 Kcal / H Max./Cycle
Required ambient temperature	25°C
Refrigerant	R 404a
Working pressure	60 psi (suction)
Warranty	1 Year
Scheduled maintenance (per manufacturer)	Every 6 Months
Certifications	ISO 9001 ISO 13485 ANMAT

Optional Accessories

Motorized gas struts



Engineered for enhanced safety, the motorized gas struts enable smooth, controlled opening and closing of the centrifuge chamber, providing an additional layer of user protection.

Buffy Coat adapters



Includes dedicated adapters for Buffy Coat processing, optimizing cell separation and ensuring reliable, reproducible results. Ideal for clinical and research applications requiring precise extraction of cellular components.



Barcode Reader

Centrifuge Rotors



**Rotor 12 B
with WindShield**

Swinging
Bucket Rotor



(R12WD)

Max RPM	4000
Max RCF	5917
Capacity	6 Bucket



Bucket
(set of 6)



(BU12)

Adapter
(set of 6)



(ADA12)

Maximun Bucket Capacity	2 x 500ml Blood Bag
Maximun Rotor Capacity	12 x 500ml Blood Bag



**Rotor 8 B
with WindShield**

Swinging
Bucket Rotor



(R8BWD)

Max RPM	4000
Max RCF	5523
Capacity	4 Bucket



Bucket
(Set of 4)



(BU8)

Adapter
(set of 4)



(ADA12)

Maximun Bucket Capacity	2 x 500ml Blood Bag
Maximun Rotor Capacity	8 x 500ml Blood Bag



Fixed-Angle Rotor
(R6A)

Max RPM	7500
Max RCF	13376
Capacity	1000 ml x unidad
Adapters per Rotor	6



☎ 11 2488 7703 ✉ presvac@presvac.net
🌐 presvac.net

